

ComCORK FLOORING


Plank Size:

9 1/32" x 7 31/64" x 48 15/64" 48"



Finish: Elastic Resin nano-particle coating

22

BARLEY NATURAL



BARBERA NATURAL



Product Overview

ComCORK is a commercial-grade, PVC-free cork plank designed with a water-proof core made from a proprietary blend of cork granules, natural stone dust, and recycled components. Cork, being a naturally-renewable wood species, that touts a 9-year regenerative harvesting cycle, is the 'sweetheart' in the sustainable flooring product realm. Its technical merits, carbon neutrality, and fact that there is zero waste with cork's manufacturing processes, make this commercial flooring something of an icon in the industry.

Specifications

Description: A cork flooring plank made with proprietary core touting the benefits of stability and water-resilience.

Colors: Jungle light, Jungle medium, forest, Barley natural, Petrified forest, Chardonnay, Barbera dawn, Barbera natural, Barley espresso, Barley brown

Finish: Prefinished with a commercial-grade water-based urethane

Composition: Cork wear on a recycled, composite core

Installation : Glue-down or float

Colors



Jungle
Light



Jungle
medium



Forest



Barley
natural



Petrified
forest



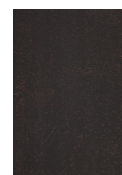
Chardonnay



Barbera
dawn



Barbera
natural



Barley
espresso



Barley
brown



Sustainable Attributes

- Bamboo is a rapidly renewable material (Species: Mao Tsu, Hairy Bamboo).
- Manufactured using low VOC and E0 Compliant adhesives and finishes.
- Finished with 7 coats of 100% solids, non-off-gassing, water-based urethane.
- Natural borate solution used to eliminate pests and mildew.
- High durability: hardness 3200 psi (Janka), abrasion resistance ≥12,600 cycles.
- Moisture content controlled: 5.47% average (ASTM D 4442).
- Formaldehyde emissions: 0.02 ppm Phenol avg. (ASTM E 1333).

Environmental Certification

- Meets E0 compliance for adhesives/finishes (low formaldehyde).
- Indoor air quality protected by strict humidity/temperature requirements.
- Non-off-gassing finishes support healthy indoor environments.
- While not explicitly mentioning third-party certifications (like CARB, FSC, or FloorScore), the spec emphasizes low VOC and formaldehyde emissions.

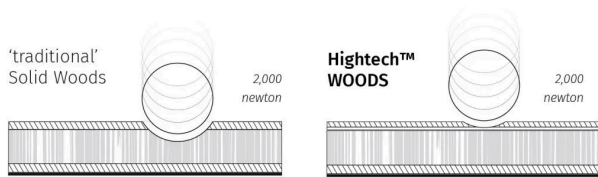
Green Building Certification

- Sustainable material (bamboo) contributes to LEED credits for rapidly renewable resources.
- Low VOC adhesives and finishes may qualify for LEED Indoor Environmental Quality credits.
- Durability and long lifecycle contribute to green building standards.
- Manufacturer emphasizes compliance with NFPA 101 Class I Interior Floor Finish (fire safety for green building).

Product Testing Specifications

- ASTM D 1037 – Janka Hardness: 3200 psi (avg.).
- ASTM D 1037-99 – Dimensional Stability: <0.00144.
- ASTM E 648 – Flammability: Class I Interior Floor Finish rating (NFPA 101).
- ASTM E 622 – Smoke Density: 270 (flaming), 330 (non-flaming).
- ASTM D 3501 – Compressive Strength:
- ASTM D 3500 – Tensile Strength: 15,300 psi parallel to grain.

Dent Resistance and Stability

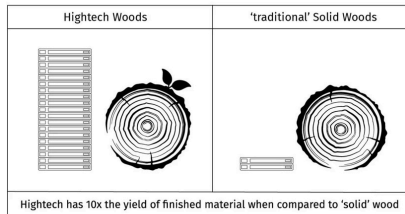


ComCORK™ Flooring is engineered for long-term durability and resilience.

Its multi-layer cork construction delivers excellent dimensional stability (<0.15%, EN ISO 23999) and proven performance in heavy-use environments.

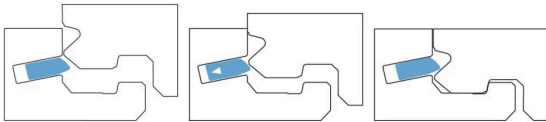
It withstands the castor chair test (EN 425: no visible effect after 25,000 cycles) and achieves Class S slip resistance (EN 13893D), making it a stable, reliable flooring option that resists wear and impact.

Sustainability



ComCORK™ Flooring is built from Quercus Suber (Cork Oak), a natural and renewable material harvested without harming the tree. Each plank is engineered with three independent layers: a 100% recycled granulated cork acoustic underlayment, a recycled waterproof cork core, and a natural cork veneer surface. The flooring is manufactured using low-VOC, EI-compliant adhesives and finishes, the flooring is also PCP-free and certified for EI formaldehyde emissions, making it both environmentally responsible and safe for indoor spaces.

Ease of Installation



Speed of installation:

- Features a Unilin® 2G interlocking tongue-and-groove system for efficient installation
- Can be installed as either a floating floor or glue-down application
- Requires a minimum 3-day acclimation period before installation

Ability to create a 'sound' finished surface

- Expansion gaps of 10mm required for large areas or transitions
- Works effectively with Taylor Resolute adhesive for glue-down applications
- Designed for long-term dimensional stability under varied environmental conditions

Use flexibility

- Available in a wide range of styles and finishes (e.g., Barley Natural, Barbera Dawn, Forest Floor, Jungle Light, etc.)
- Provides excellent sound insulation (IIC 65 dB, STC 60 dB) and thermal resistance (0.06 m²K/W) for comfort and performance