

'3D' Cork Bricks™ - Installation Instructions

Important:

- Packaged tiles should be acclimated on site for at least 72 hours before installation (Note: it is important to open the boxes and remove the plastic to effectively acclimate). Extend acclimation time if in dry climate.
- Due to inherent shade and texture variations, it is recommended to mix material from multiple boxes if ordered in multiple box increments.
- The recommended substrate for installing the '3D' Cork Bricks is smooth, flat, primed, cured, and clean surface, free of any contaminants that would affect the self-adhesive bond.
- Install '3D' Cork Brick tiles once desired layout is determined, using either a 'water-based' contact cement or a 'single component' unilateral glue.

Pre-installation Guidelines

These instructions are designed to supplement common sense during the installation procedure. If you have any questions, please contact your supplier prior to the installation process.

Substrate:

The substrate to which the Cork Bricks™ are installed, must be cured (painted or primed), structurally sound and flat (free of voids, and level within ½" over 48"), dry, clean, and free of any contaminants (such as dust, adhesive, drywall compound, etc.) which would affect adhesion.

Note: If any of these characteristics are not met, it is imperative to fix them prior to the start of installation process. If you are in doubt, contact your supplier for application assistance.

Acclimation:

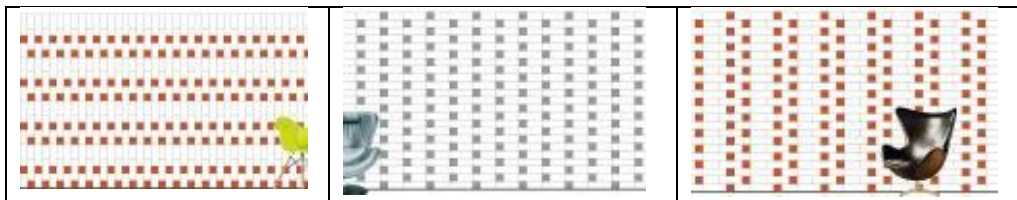
Acclimating involves bringing the Cork Bricks™ to equilibrium within the space to which they will be installed. We recommend allowing the material to acclimate for 72 hours prior to installation, in the space to which the material will be installed (at year-round climatic conditions). Acclimating is achieved by opening the boxes, removing the plastic around the bricks, and allowing air to flow between the individual Cork Bricks™.

Note: it is important to open the boxes and remove the plastic to effectively acclimate the material to the room conditions. If the material is NOT properly acclimated (depending on the site conditions), the Cork Bricks™ can shrink, visually revealing the substrate to which the Cork Bricks™ are installed, or they could expand slightly. Cork Bricks™ are best installed at room temperature.

Please Note: Shrinkage and/or expansion is not considered a manufacturing defect.

Layout:

The '3d' version of the Cork Bricks™ come in set sizes (3 different sizes, each with a different thickness), and can be installed in a multitude of layouts or orientations – either by pattern or done randomly. The choice of layout is up to you, but here are some standard layout options if you prefer guidance.





Sorting:

It is always recommended to mix multiple boxes of material together when you are installing in a multiple box increment. Cork is a natural material that inherently has variations in size, color, and shape, and this is expected, and one of the beauties of using the '3d' version of the Cork Bricks™.

Working with '3D' Cork Bricks:

The '3d' version of the Cork Bricks™ take on the structure of its mounting surface. When required, Cork Bricks™ can be cut with standard woodworking tools or a straight edge.

Cork Bricks™ have natural characteristics that include, but not limited to: color variation, open pores, and minor size variations. These characteristics are understood and not considered a product defect.

Note: Always test fit the Cork Bricks™ prior to affixing it in place (as removal is difficult, and would likely damage the piece being removed, and potentially also the substrate to which the tile is being applied).

Recommended adhesives:

There are 2 recommended adhesives for the installation of the Cork Bricks™, either a 'water-based' contact Cement or a 'single-component' unilateral glue. Each method has certain pros and cons. Should you have specific questions about the pros/cons and/or installation methods, please contact your Sustainable Materials representative.

- 1) WAKOL D3540 (water-based contact adhesive). Water-based contact cement sets very quickly which allows one to start in the middle of the application area, as well as move through the installation process in the most time effective manner. Installation surfaces should be primed and/or painted (see *above note*) prior to use of the contact adhesive, with the topical coating being in a 'cured' state. (Please note that unprimed walls will absorb contact adhesive, diminishing its' effectiveness, and therefore this is not recommended). **FOLLOW THE MANUFACTURER'S INSTRUCTIONS ON THE CONTACT CEMENT SELECTED FOR THE INSTALLATION.** Contact adhesive is to be applied to both the application substrate and the back of the Concrete Flex tiles and left to dry (for a minimum of 45 minutes) prior to being suitable for the actual installation process to commence. Installing before the contact cement is fully dry (on either surface) will result in ineffective adhesion. Tap/hit tiles with a soft-headed mallet (min. 2" face) to "set" the adhesive bond completely.
- 2) WAKOL MS262 (single component urethane adhesive). Though it does not enable an immediate permanent bond like that created with 'contact adhesive', it is often considered easier in that the adhesive is applied to only one surface (the wall), and by the nature of the product, there is more time to set (and/or move as needed) the Concrete Flex pieces into place on the wall. For installing with the MS262 adhesive, a U-Notch 1/32" x 1/16" x 1/32" trowel should be used. Apply the adhesive directly to the primed surface and spread with trowel (into level and even beads). Press the Concrete Flex material directly into the adhesive and roll with hand-roller (kitchen rolling pin, etc.) to ensure even and level bond. **Note: It is important to follow the manufacturer's recommendation as it relates to the application and ensure the tiles are applied within the optimal open time** (see *instructions included in the packaging*). High humidity will decrease your working time so adjust accordingly.

Installation Procedure

Once your substrate is properly prepared, the material is acclimated, and you have determined the layout you will use, the installation can begin.

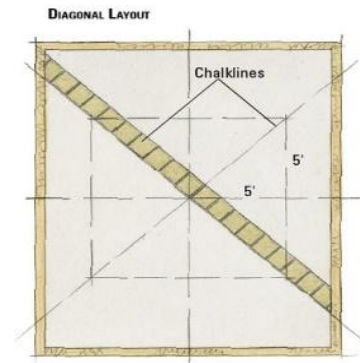
Follow the manufacturers' recommendations for the adhesive selected.

Based upon the layout chosen, determine where you want to start the installation.



For horizontal or vertical (full wall) installations, it is recommended to mark off a level line (using a level) at roughly eye level (approx. 72" up from the floor), and then another line, vertically, at the center of the space to which the Cork Bricks™ are being installed. Where the lines cross, is where you should begin. You can also measure a certain distance off the floor (or the ceiling) and use that as the level line for installing – this works fine if the floor (or wall) is level.

For diagonal installations, it is recommended to follow a similar method as above (by finding the center point of the wall), but instead of relying on horizontal and vertical lines, you will draw diagonal lines at 90 degrees to one another. Once these diagonal chalk lines are drawn, you then need to determine in which direction you want the Cork Bricks™ to be oriented (either along the left line, or the right line).



To install the '3D' Cork Bricks™

- Align one edge of the first cork piece along the guideline (ie: starting point) you created and press the Cork Bricks™ into place (avoid touching the adhesive surface or allowing it to get dirty or wet).
- Install subsequent Cork Bricks™ in the same fashion, until the installation is complete.
- Please note that it is advisable to install the subsequent Cork Bricks™ at an angle, starting the placement at the edge of the Cork Bricks™ formerly installed to ensure that the Cork Bricks™ are abutting each other tightly.

Care and Maintenance Instructions

Cleaning

- Blot up spills and spots immediately (Standing or trapped moisture can penetrate the Cork Bricks, which can cause irreversible discoloration and damage).
- Vacuum and / or dust mop the wall to minimize abrasive grit and dirt. *Note: Do not use vacuum with beater bars.*
- If more vigorous cleaning is needed, you can clean the wall with BonaX surface cleaner available from your local hardware store or www.bona.com .) Sustainable Materials recommends a Terry Cloth to prevent scratching or marring of wall.
- ALWAYS WIPE DRY IMMEDIATELY until no moisture is visible on the wall. Do not use wax, polish, oil soap, abrasive cleaners, steel wool, scouring powder, or ANY appreciable amount of water.
- Do not use wet mops, wet scrubbers or steam cleaners as these products may cause irreversible discoloration and damage.

Protecting Your Investment

- Your newly installed Cork Bricks™ are made from natural wood fibers and therefore are subject to change from excessive moisture, or nonconforming environmental conditions. Remove any standing or trapped water immediately and maintain an indoor relative humidity level of 35-55% throughout the year.

For any questions regarding Installation and/or Care and Maintenance instructions, please contact Sustainable Materials or your local representative.