

**PRODUCT NAME:**

**HEMP SHAPES™ STRIPES**

**MANUFACTURER/SUPPLIER:**

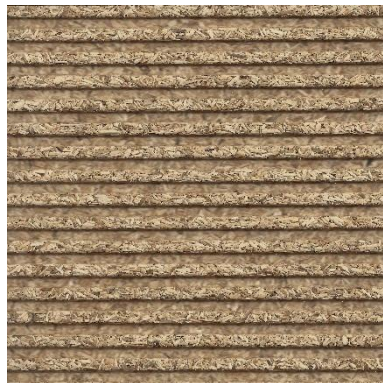
Sustainable Materials

5403 Western Ave #C

Boulder, CO 80301

Ph: (720) 449-3063

Email: [info@sustainablematerials.com](mailto:info@sustainablematerials.com)



**PRODUCT DESCRIPTION:**

**Hemp Shapes™ STRIPES** are made by taking 'post-industrial' recycled HEMP fiber and mixing with Low-VOC pigments and adhesives prior to heat pressing into a rigid pane with embedded ridges running the length of the panel. The Hemp Shapes panel will provide acoustic reflection, diffusion and sound absorption, while providing a unique visual to any interior décor application.

**Sustainable Attributes of Hemp:**

- ✓ Hemp is Rapidly Renewable fiber, with one of the quickest growth cycles of any natural fiber used in the development of construction materials (typically harvested 70-90 days after planting; and multiple plantings occur each year).
- ✓ Hemp is the most efficient plant for Carbon Sequestration (ie: pulling carbon from the atmosphere).
- ✓ Hemp does not require the use of pesticides during its' growth (due to its natural resistance to pests and weeds).
- ✓ Hemp is completely biodegradable and provides nutrients to the soil during the harvesting process (ie: there is a benefit to farmers to plant hemp as it enhances the soil morphology).
- ✓ All parts of the Hemp plant are used for different functions leaving no by product waste.

**COLORS:**



White



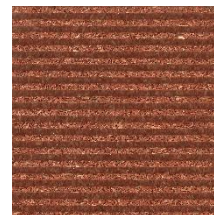
Natural



Thatch



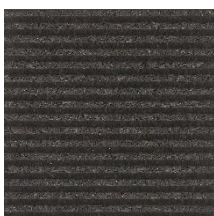
Sage



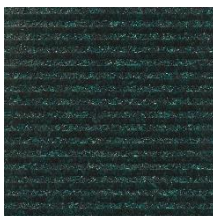
Orange



Blue



Grey



Forest



Brown



Black

**PANEL SIZE:**

Panel Length: 27-1/6"

Panel Width: 15-1/3"

Sq. Ft. per panel: 2.96

**BOX QUANTITY**

Panels Per Box: 10

Sq. ft. Per Box: 29.6