



## **Textura Fusion™ - Installation Instructions**

### **Pre-Installation and Jobsite Requirements**

- Textura Fusion™ can be installed in most places in the home and commercial areas. They are not suitable for — and should be not installed in — humid or wet areas such as bathrooms or saunas.
- Textura Fusion™ cannot be installed on ceilings or angled walls.
- Textura Fusion™ can be installed both horizontally and vertically.
- Packages should be transported and stored horizontally acclimate unopened packages in a dry, well-ventilated area of the job site for at least 48 hours before installation.
- Maintain a room temperature of at least 18°C (64°F) and relative air humidity (RH) range between 35-65% during storage and installation.
- Panels from several different packages can be mixed to get your preferred look.
- Examine each panel in daylight before installation to look for any damage or visible defects in color or texture. Problems with defects need to be brought to the attention of the supplier before installation. Any planks that are installed are considered acceptable and no claim will be accepted for them
- As the buyer, you are responsible for approving the product even if it is installed by a professional installer. If the product is installed, it is seen to have been approved.
- Textura Fusion™ clips are small parts, keep them away from small children.

### Substrates

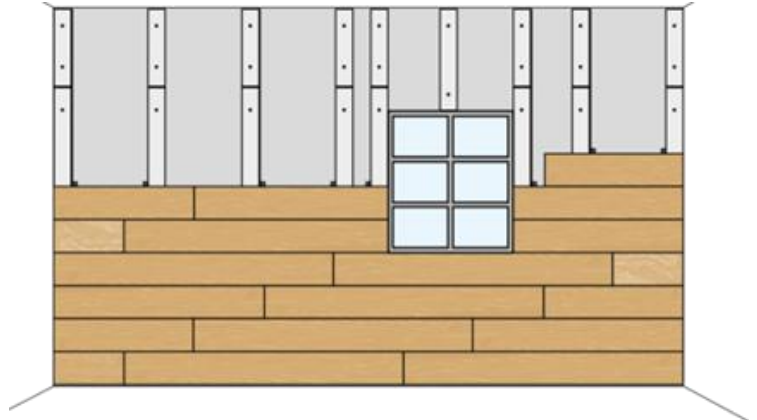
- The substrate (the surface that Textura Fusion™ will be installed on) should be flat, load-bearing and structural, permanently dry, and free of large cracks or other imperfections.
- Any unevenness greater than 3mm (1/16") over a length of 2 meters (6 ft) needs to be levelled — use patching or levelling compound or ground/sand the area.
- Ensure the substrate is clean.
- Wallpaper should ideally be removed before installing Textura Fusion™.
- Textura Fusion™ must be installed as per the manufacturer's instructions.

### Tools Required:

- Chalk line and level
- Cutting apparatus (Miter saw, jigsaw, etc.)
- Screws and/or nails
- Construction adhesive
- Fastening Clips
- *Note:* Screws, glue, and other necessary materials to attach the rail support/panels to the wall are not included. Make sure that the screws, glue, and other mounting material are suitable for the type of wall that you are installing on. If you have any questions, contact Sustainable Materials.



## General Installation Summary:

- The general procedure is to mount furring strips (created from the flooring planks being installed), to the wall substrate (vertically if the finished planks will be installed horizontally-ie: from side to side, or horizontally if the planks will be run up the wall), and then applying the supplied 'clips' which are attached to the side of the furring strip(s), which act to hold the panels in place.



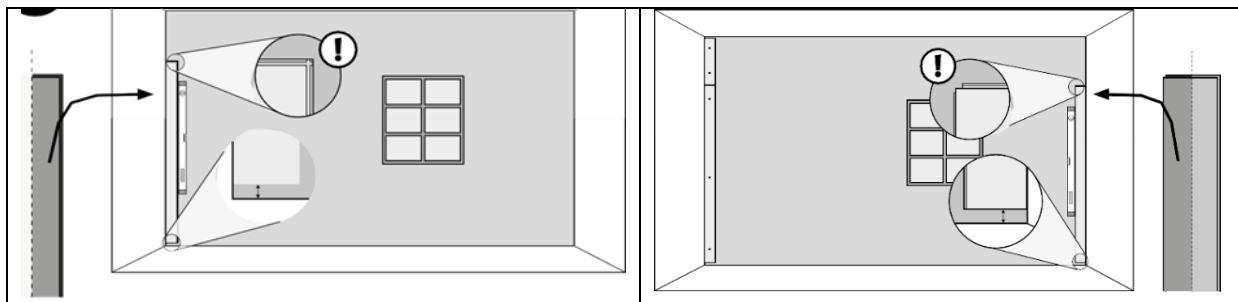
## **Installation procedure for Horizontal Installation:**

The support/furring strips are to be cut from existing Textura Fusion™ planks. Rip the plank in half and attach it to the wall substrate (with screws and adhesive), making sure the placement is level (ie: vertical) and the screws heads are countersunk (note: countersinking is important due to the density of the material). The Furring strips should be placed no farther than 600mm (23-5/8") apart. (Note: it is critical to use Textura Fusion™ planks as the furring strips as the Textura Fusion™ clips are designed specifically to connect the face plank with the ripped strip).

	
<p><i>Full Plank (line shown for cutting purposes)</i></p>	<p><i>Plank is ripped in half</i></p>

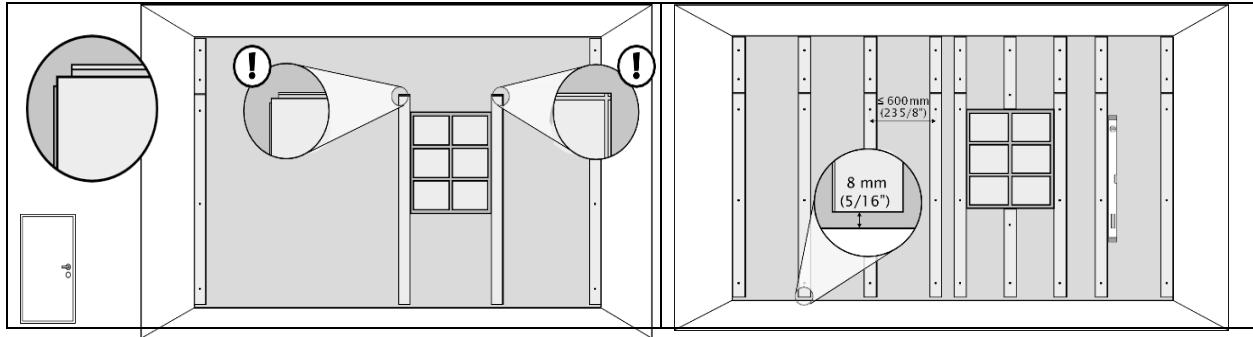
Note: For consistency, the tongue and groove side of the ripped Fusion plank should be placed on the right side (ie: left side is the ripped side). Exceptions to this guidance would be:

- at the wall corners, the cut edge of the furring strip(s) should face the corner (so the tongue/groove side of the plank is towards the middle of the space). The fusion clip, in this situation, will be placed on the left side of the plank, where it can connect with the locking mechanism on the plank).
- around fixtures, like windows or doors, it is important to butt a furring strip tightly to the fixture, as this will ensure a rigid and stable installation

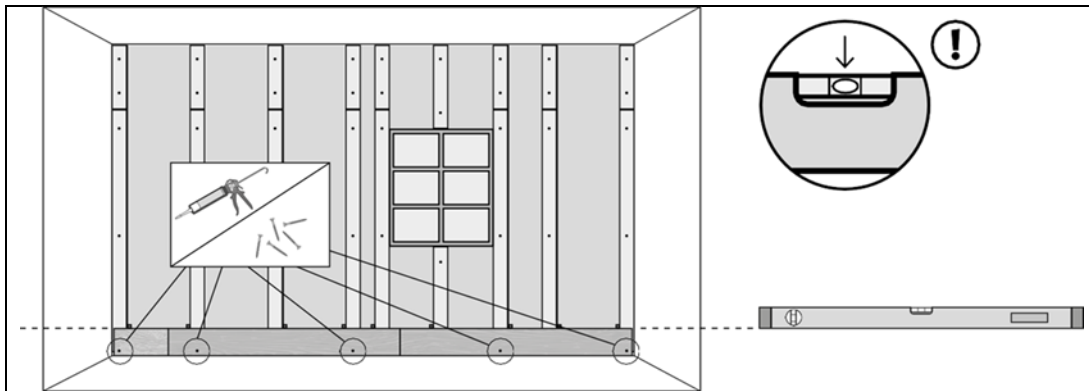




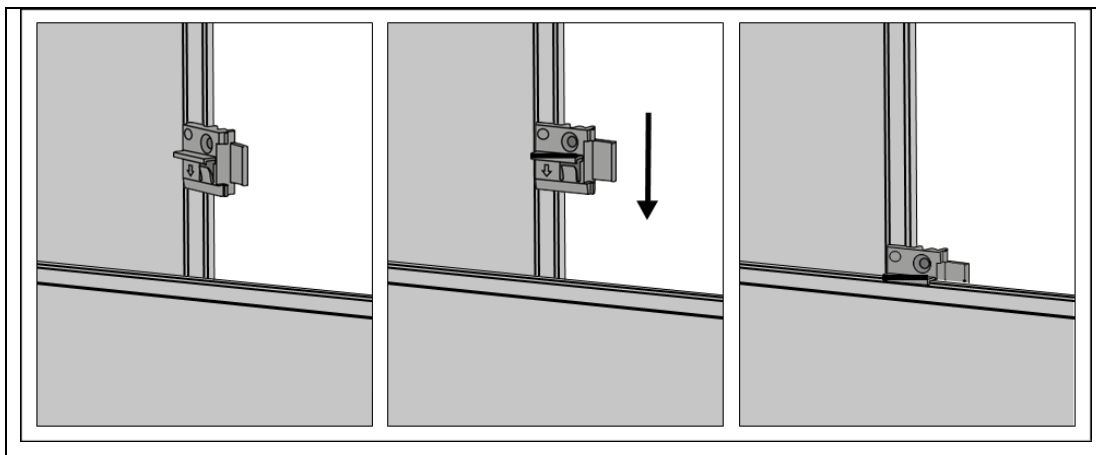
Also, ensure that when the height of the wall exceeds the plank length, the vertical substrate strip has the locking mechanism exposed, so the adjacent piece you are attaching is fastened by the locking mechanism and NOT just stacked butt end to butt end. *Note:* at every position where one plank is attached to another (whether it is as a 'firing' strip or as the finished face) it is imperative that the locking mechanism on both sides (ie: both planks) is intact.



Place the first plank at the bottom of the wall, leveling and applying construction adhesive against the firing strips. You may also use screws to affix the first row to the firing strips. If you screw, you will want to put them low enough to be covered up by the baseboard.

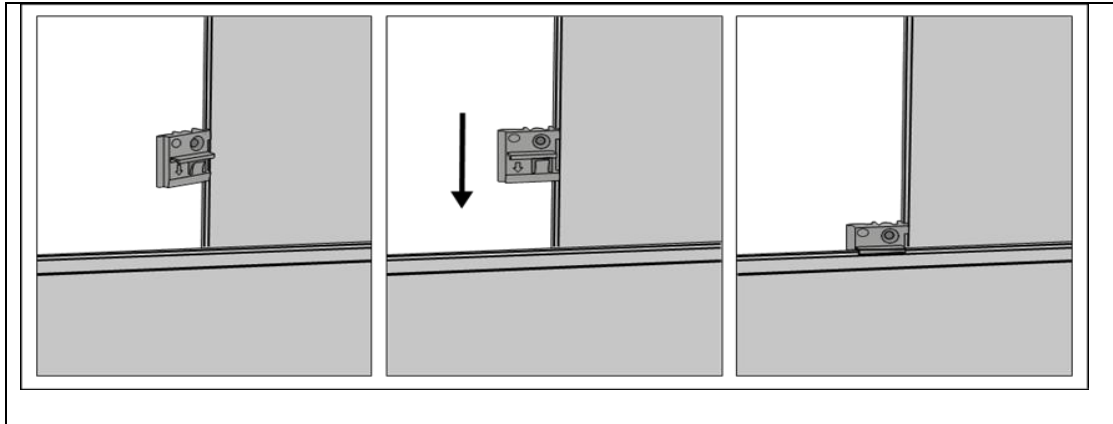


After the first plank is positioned, place/snap the clips on the right side of the firing strips and slide them into place on the top of the horizontally laid plank.

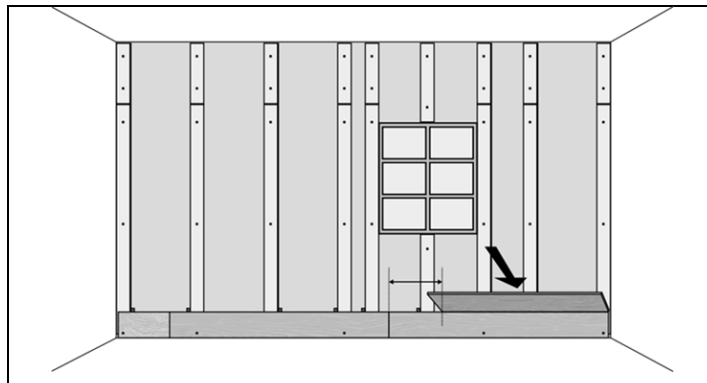




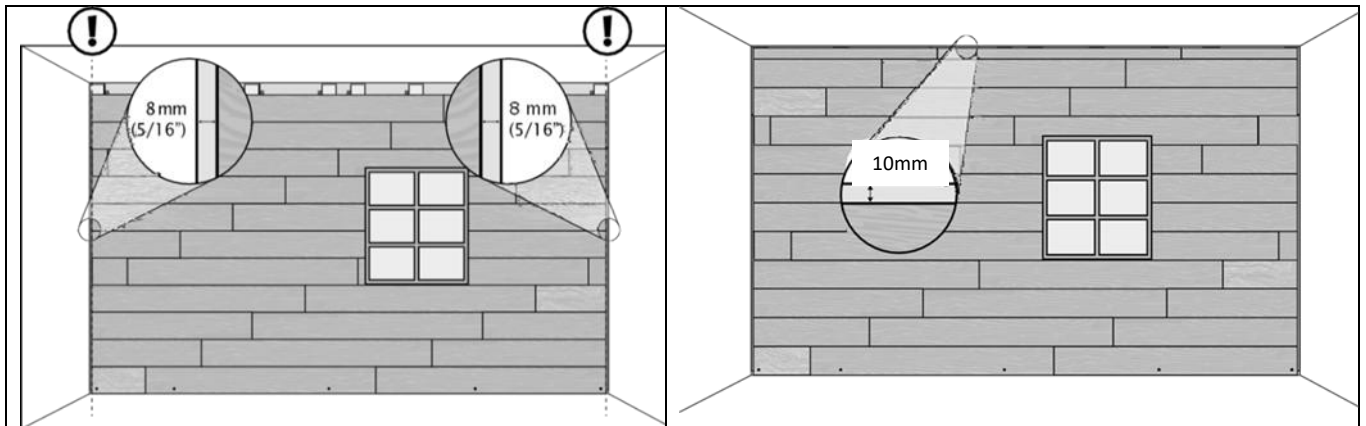
Where the clip must be placed on the opposite/left side of the plank, attach as shown below.



For the second row, cut to a suitable length to ensure sufficient random end joint spacing, and then place/start on the right side of the wall. Lay the tongue into the groove (of the locking mechanism), and fold it up into place.

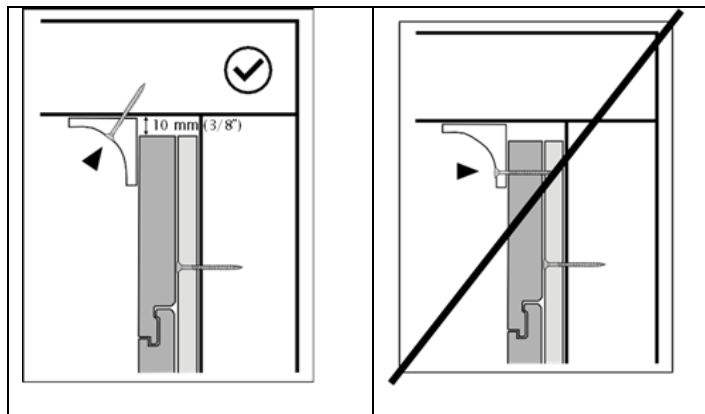


Leave expansion gaps around the perimeter of the installation area. We recommend 5/16" on each side on the short side of the planks, and 3/8" against the long side. Note: these sections can be covered by trim.





If you are applying cornerbead or other trim, do NOT face nail or screw it to the Fusion plank, but rather nail the trim to the substrate (ie: to not hinder the expansion/contraction of the Fusion Plank)



If you have any questions, please contact your Sustainable Materials representative!